

FILED FOR RECORD
MARTIN COUNTY, FLA.
1974 JUL -3 AM 11:30
COUNTY CLERK
CLERK OF MARTIN COUNTY
BY _____

I, LOUISE V. ISAACS, CLERK OF THE CIRCUIT COURT OF MARTIN COUNTY, FLORIDA, HEREBY CERTIFY THAT THIS PLAT WAS FILED FOR RECORD IN PLAT BOOK 6, PAGE 53, MARTIN COUNTY, FLORIDA, PUBLIC RECORDS THIS 3rd DAY OF July, 1974.

LOUISE V. ISAACS
CLERK CIRCUIT COURT
MARTIN COUNTY, FLORIDA
FILE No. 21720
BY: Charlotte Burkey
DEPUTY CLERK

SARITA HEIGHTS WEST

CITY of STUART
MARTIN COUNTY, FLORIDA

BEING DESCRIBED AS: From the N.W. corner of Section 10, Township 38 South, Range 41 East, run S. 0°-27'-58" W. a distance of 1330.20 feet to a point; thence run S. 89°-41'-02" E. a distance of 1993.88 feet to the Point of Beginning; thence run N. 0°-43'-40" E. a distance of 10.00 feet; thence run N. 87°-54'-21" E. a distance of 14.83 feet; thence run N. 0°-56'-48" E. a distance of 608.84 feet; thence run N. 89°-03'-12" W. a distance of 5.00 feet; thence run N. 0°-56'-48" E. a distance of 46.24 feet, thence run S. 89°-42'-03" E. a distance of 655.05 feet to the west line of the Sarita Addition of the Broadway Section of St. Lucie Estates, as recorded in Plat Book 1, Page 12, Martin County, public records; thence run S. 0°-56'-48" W. a distance of 677.95 feet, along said west line and the southerly extension thereof; thence run S. 87°-54'-18" W. a distance of 665.55 feet; thence run N. 0°-43'-40" E. a distance of 40.00 feet to the Point of Beginning. Less parcels A, B, and C, shown as NOT INCLUDED.

DEDICATION

STATE OF FLORIDA
COUNTY OF MARTIN

Know all men by these presents that C. and D. CONTRACTORS INC., a corporation organized and existing under the laws of the State of Florida and MARTIN COUNTY, a Political Subdivision of the State of Florida, owners in Fee Simple of the land shown hereon, titled SARITA HEIGHTS WEST, has caused said lands to be surveyed and platted as shown hereon and do hereby dedicate to the perpetual use of the public any vested interest in the roads and utilities easement as shown hereon. In witness whereof C. and D. CONTRACTORS INC. and MARTIN COUNTY have caused by these presents to be signed by its President and the Chairman of The Board of County Commissioners, respectively.

Dolores Plezja
Witness
Robert H. Coy
BY ITS PRESIDENT:
Dr. Edward A. Geary
CHAIRMAN
BOARD OF COUNTY COMMISSIONERS
MARTIN COUNTY, FLORIDA

ACKNOWLEDGEMENT

STATE OF FLORIDA
COUNTY OF MARTIN

Before me this day personally appeared ROBERT H. COY, President of C. and D. Contractors Inc., well known to me, and he acknowledged before me that he executed the foregoing Dedication.
Witness, my hand and official seal this 24th day of June 1974.

MY COMMISSION EXPIRES:
May 24, 1978
Dolores A. Plezja
NOTARY PUBLIC
STATE OF FLORIDA at LARGE

Before me this day personally appeared Dr. EDWARD A. GEARY, Chairman of the Board of County Commissioners of Martin County, Florida, well known to me, and he acknowledged the foregoing Dedication.
Witness, my hand and official seal this 24 day of June 1974.

MY COMMISSION EXPIRES:
October 14, 1977
Stephen B. Calvert
NOTARY PUBLIC
STATE OF FLORIDA at LARGE

MORTGAGE HOLDERS CONSENT

STATE OF FLORIDA
COUNTY OF MARTIN

STUART NATIONAL BANK, a corporation organized and existing under the laws of the State of Florida, hereby certify that they are the holders of a certain mortgage on the land described hereon and do consent to the dedication hereon and do subordinate their mortgage to such dedication.

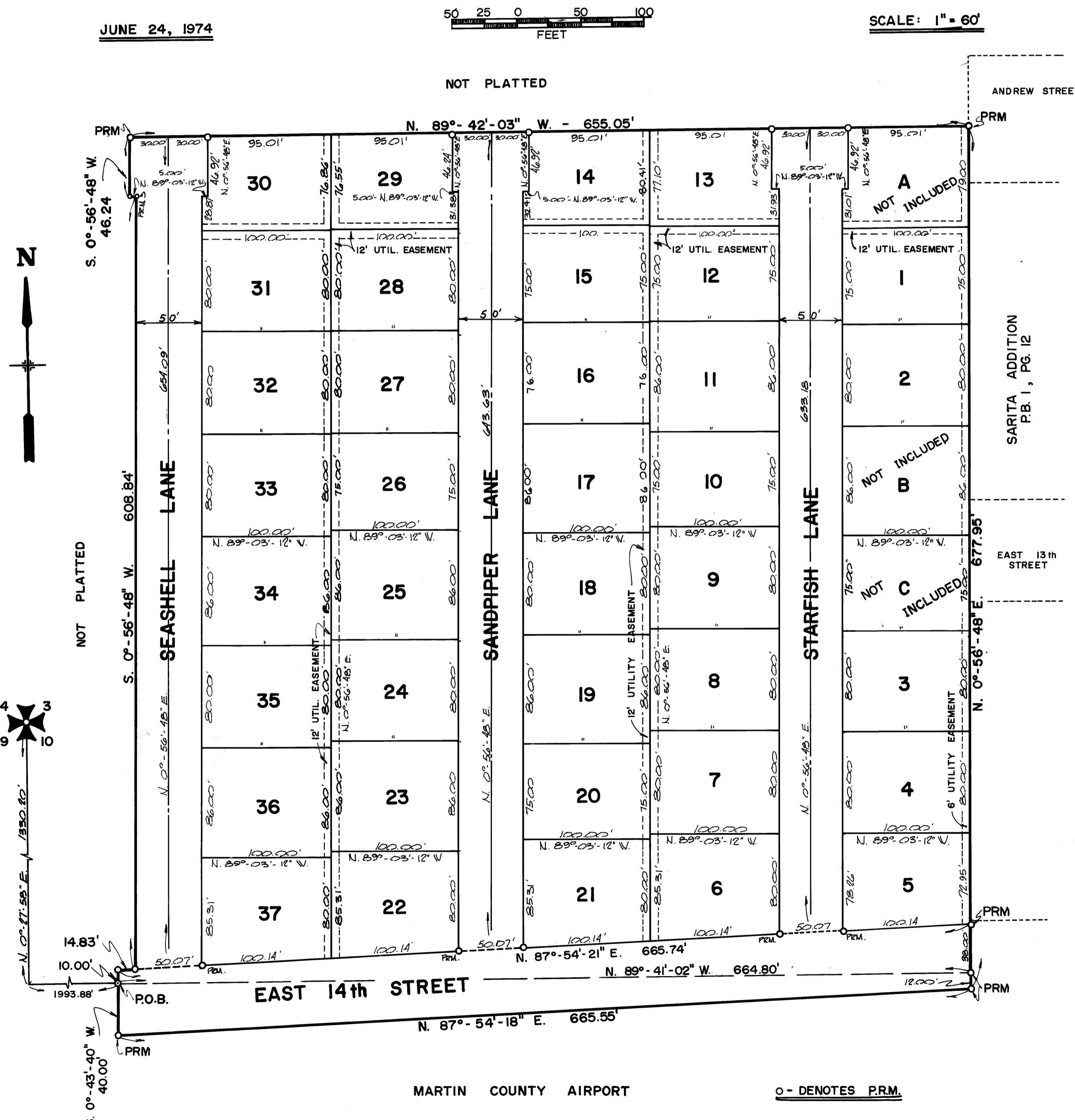
Mary Ethel Lane
Witness
Jack T. Williams
BY ITS PRESIDENT: JACK T. WILLIAMS

ACKNOWLEDGEMENT

STATE OF FLORIDA
COUNTY OF MARTIN

Before me this day personally appeared JACK T. WILLIAMS, President of Stuart National Bank, well known to me, and he acknowledged that he executed the foregoing Mortgage Holders Consent.
Witness, my hand and official seal this 24 day of June 1974.

MY COMMISSION EXPIRES:
Oct. 29, 1975
Mary Ethel Lane
NOTARY PUBLIC
STATE OF FLORIDA at LARGE



TITLE CERTIFICATION

STATE OF FLORIDA
COUNTY OF MARTIN

I, JOHN E. PREWITT, a member of the Florida Bar, hereby certify that apparent record title to the following described land:

From the N.W. corner of Sec. 10, Twp. 38 S., Rge. 41 E., run S. 0°-27'-58" W. a distance of 1330.20 feet to a point; thence run S. 89°-41'-02" E. a distance of 1993.88 feet to the Point of Beginning; thence run N. 0°-43'-40" E. a distance of 10.00 feet; thence run N. 87°-54'-21" E. a distance of 14.83 feet; thence run N. 0°-56'-48" E. a distance of 608.84 feet; thence run N. 89°-03'-12" W. a distance of 5.00 feet; thence run N. 0°-56'-48" E. a distance of 46.24 feet; thence run S. 89°-42'-03" E. a distance of 655.05 feet to the west line of the Sarita Addition of the Broadway Section of St. Lucie Estates, as recorded in Plat Bk. 1, Page 12, Martin County public records; thence run S. 0°-56'-48" W. along said west line a distance of 665.95 feet; thence run N. 89°-41'-02" W. a distance of 664.80 feet to the P.O.B.

as shown on this plat is in the name of the corporation executing the dedication hereon. A mortgage from C. and D. Contractors Inc. to the Stuart National Bank encumbering the land described hereon is recorded in Official Record Book 374, Page 1232, Martin County, Florida.

John E. Prewitt
JOHN E. PREWITT
ATTORNEY AT LAW
STUART, FLORIDA

I, STEPHEN B. CALVERT, a member of the Florida Bar, hereby certify that apparent record title to the following described land:

From the N.W. corner of Sec. 10, Twp. 38 S., Rge. 41 E., run S. 0°-27'-58" W. a distance of 1330.20 feet to a point; thence run S. 89°-41'-02" E. a distance of 1993.88 feet to the Point of Beginning; thence continue to run S. 89°-41'-02" W. a distance of 664.80 feet; thence run S. 0°-56'-48" W. a distance of 12.00 feet; thence run S. 89°-54'-18" W. a distance of 665.55 feet; thence run N. 0°-43'-40" E. a distance of 40.00 feet to the P.O.B.

as shown on this plat is in the name of the Political Subdivision of the State of Florida executing the dedication hereon. There are no mortgages encumbering the described land.

Stephen B. Calvert
STEPHEN B. CALVERT
ATTORNEY AT LAW
STUART, FLORIDA

SURVEYOR'S CERTIFICATE

STATE OF FLORIDA
COUNTY OF MARTIN

I, RANDELL E. FISHER, do hereby certify that this plat of Sarita Heights West is a true and correct representation of the lands surveyed, that the survey was made under my supervision, and that the survey data complies with all of the requirements of Chapter 177, Florida Statutes, and permanent reference markers have been set.

Randell E. Fisher
RANDELL E. FISHER
FLORIDA SURVEYOR Reg. No. 1946

APPROVAL

CITY of STUART
Edwin L. Glasscock
City Manager
Date July 1st, 1974

BOARD OF COUNTY COMMISSIONERS
MARTIN COUNTY, FLORIDA
Dr. Edward A. Geary
Chairman
Date July 24, 1974.

MARTIN COUNTY AIRPORT O - DENOTES P.R.M.

G. T. SLIDER & ASSOC., INC.
CONSULTING ENGINEERS
STUART, FLORIDA